

FLAMEFIGHTER®

Micro-Capsule Auto Fire Extinguisher Patch

Automatic Sensing / Convenient and Fast / Easy to Install / Rapid Fire Extinguishing and Re-ignition Prevention



Powerful Brand. Recommended by Firefighting Authorities
Size and Dimensions can be Cut to Fit as Needed

Micro-Capsule Auto Fire Extinguisher Patch

Multiple product features.

Automatic
sensing

Easy to
install

Compact
in size

Environmental
protection
and health

Clean fire
extinguishing

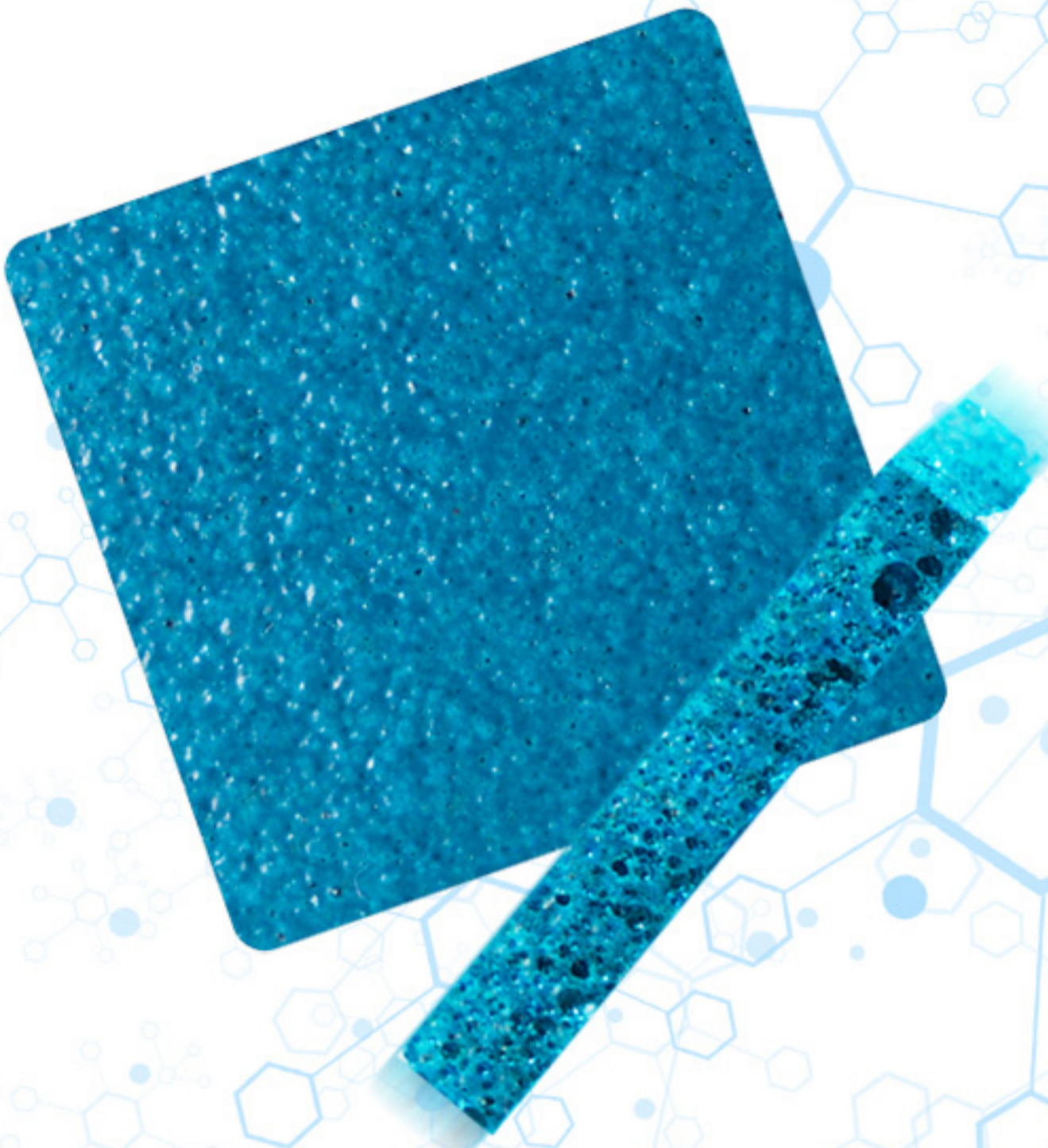
Safety
insulation

Quick fire
extinguishing

Cold and heat
resistance

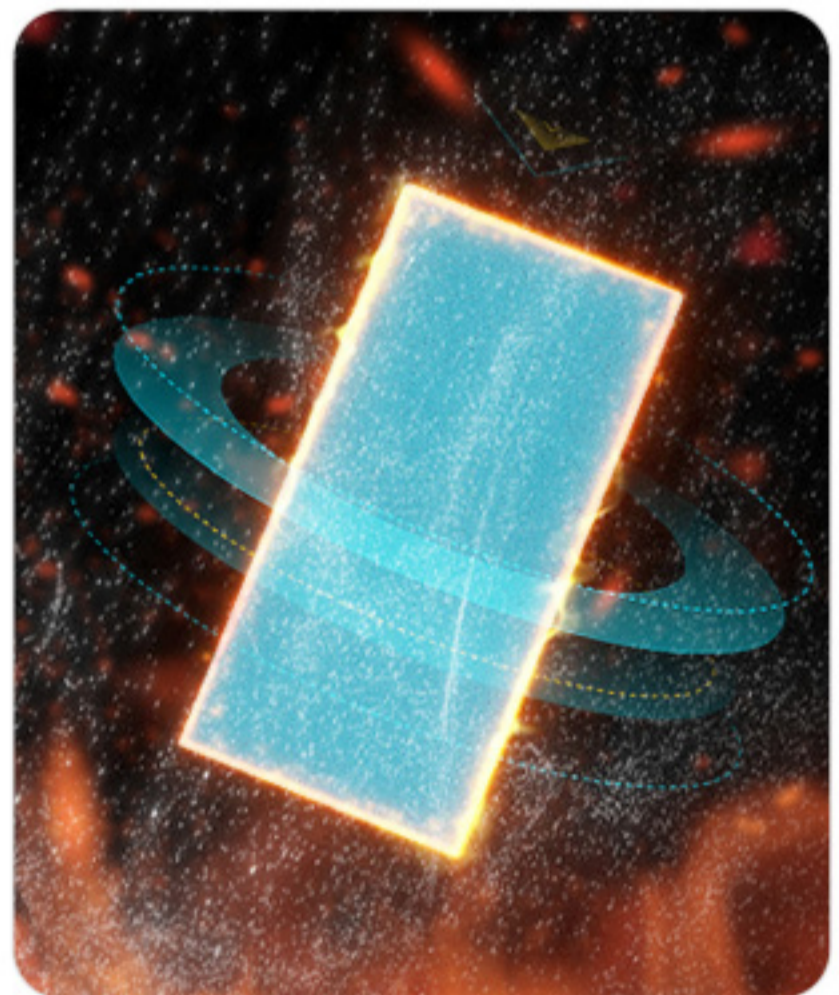
A combination of technology and quality.

The fire-extinguishing agent is encapsulated within particles using microencapsulation technology.



Temperature-activated release of fire-extinguishing agent

When the temperature rises to the activation temperature, the microcapsules rupture, releasing the fire-extinguishing agent to extinguish the fire.



Automatic release

When the temperature rises to around 105°C: the fire-extinguishing agent rapidly vaporizes, bursting the microcapsules, and automatically releases into the socket to extinguish the initial flame, preventing the spread of the fire and the ignition of other items.

Home fire hazards

Automatically releases fire-extinguishing agent,
effectively preventing the spread of fire

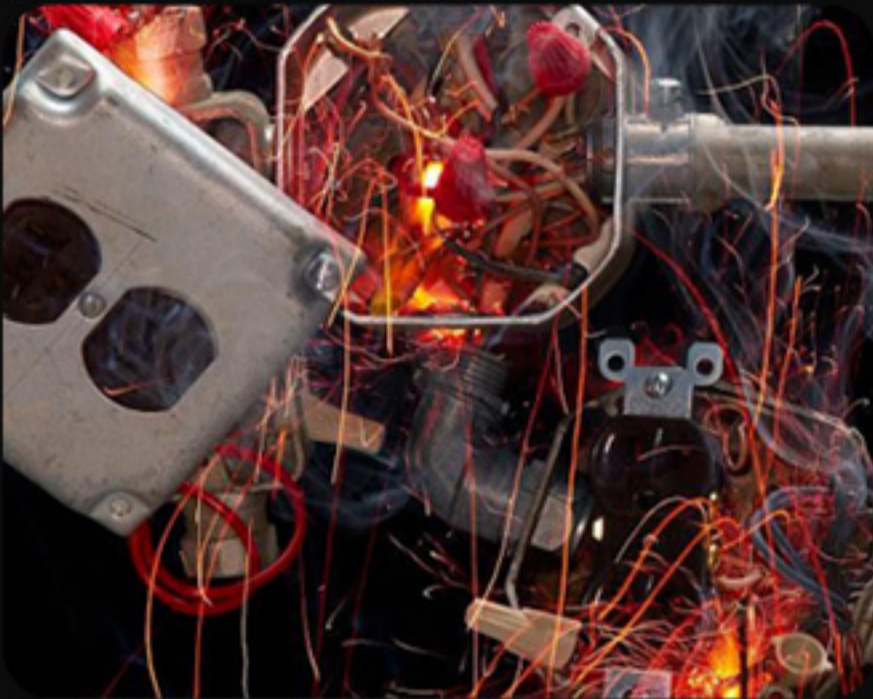
Apply early, prevent first; if fire occurs, extinguish promptly.



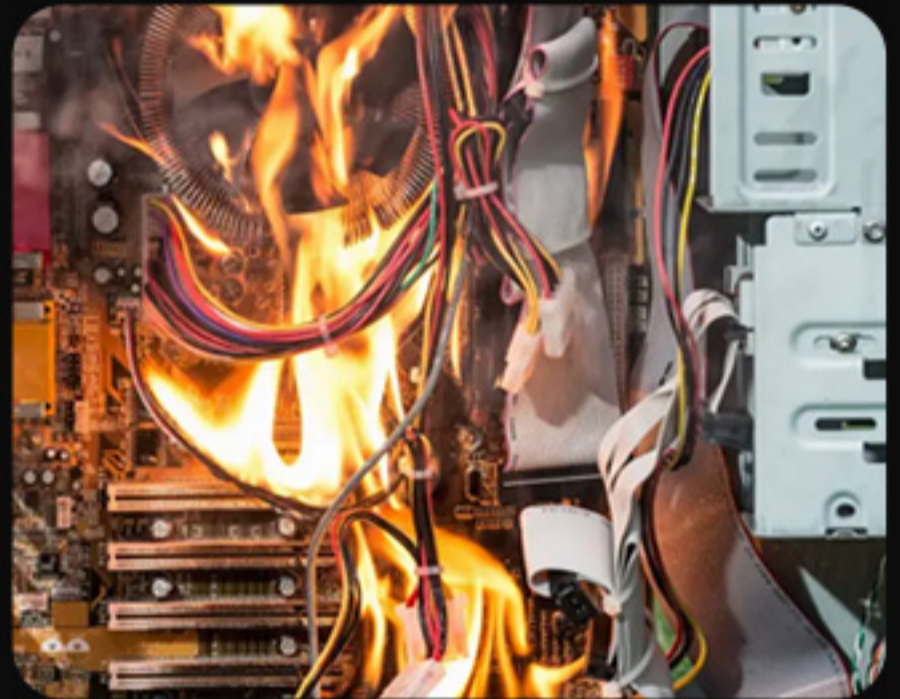
Aging electrical circuits



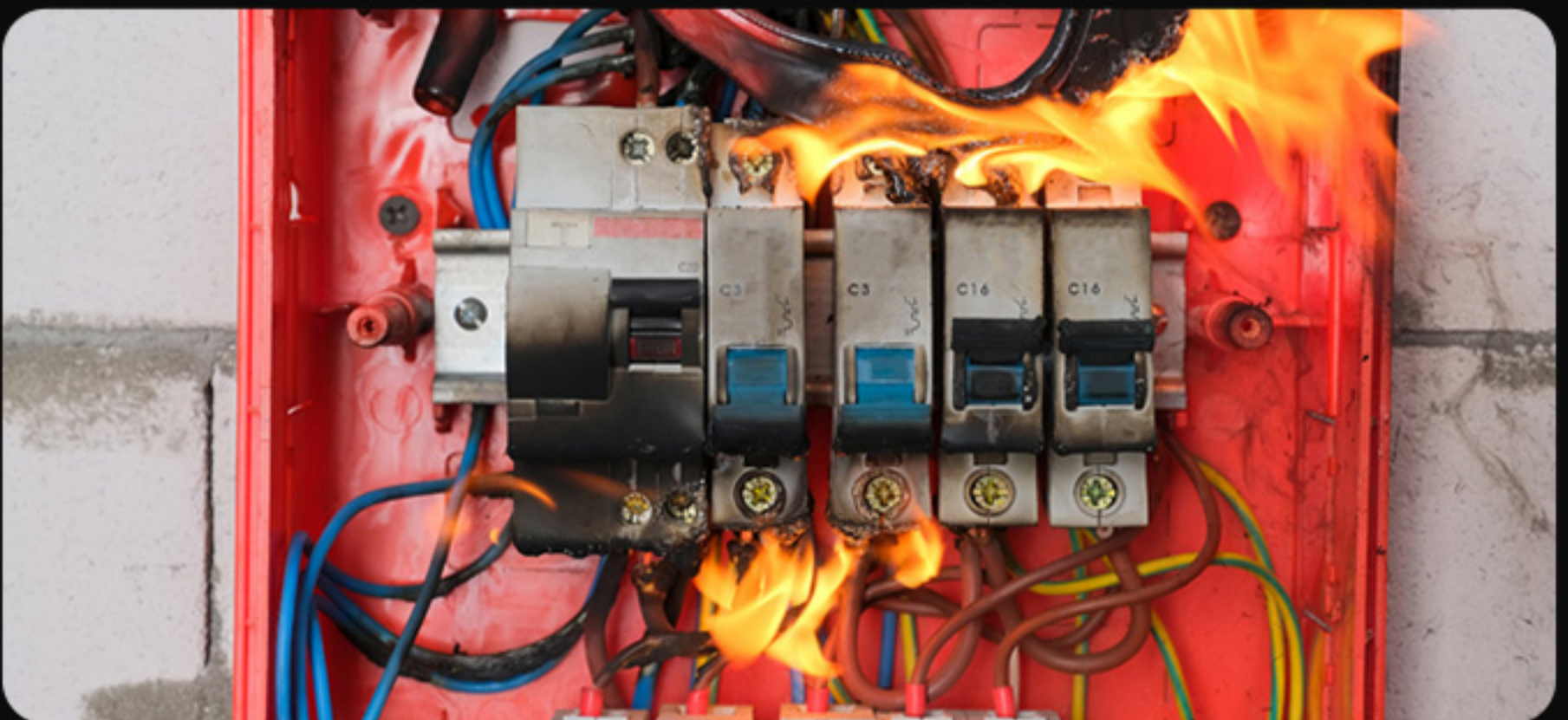
Poor electrical contact



Construction quality issues



Increased electrical load



Causes of electrical fires: aging circuits, poor contact, increased electrical load, construction quality issues, inherent electrical appliance issues, etc.

High Safety Factor, Rapid Fire Extinguishing

Small Flames Pose Great Danger
Small Patches Have a Big Impact



Who can protect the safety of your family?

Only by taking safety seriously can you protect the lives and property of your loved ones

Automatic Fire Extinguishing Patches Eliminate Fire Hazards



Add a layer of life insurance

Guard the safety of your family

Small patches make the home cozier



Who can guarantee
a lifetime of safety
and peace for you?

With an extra layer of
protection, you can have
more peace of mind.



After decades of hard work, you've bought a car and a house; do you really want a small flame to take everything away from you?

When going out to work or traveling, when there's no one at home.



Ordinary handheld fire extinguishers cannot automatically extinguish the fire source.

Automatic fire extinguishing patches guard the safety of your entire family!



Product Parameters

Product Model: FFAFP-1X1

Size: 10mm * 10mm (length and width + 1mm thickness of 3 ± 1 mm)

Shape: Sheet

Color: Blue (other colors available upon customer request)

Packaging: Paper box packaging

Installation Method: Double-sided adhesive self-adhesive or magnetic attachment

Activation Method: Automatically releases fire-extinguishing agent when temperature reaches $105 \pm 10^\circ\text{C}$, no additional devices required

Fire Extinguishing Time: 15-60 seconds (data may vary depending on the environment)

Fire Extinguishing Times: Approximately 3-20 times (tested under experimental conditions)

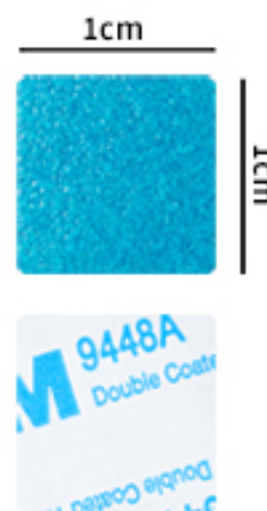
Fire Extinguishing Environment: Enclosed spaces

Storage Conditions: Keep in a cool, dry place, away from light, and store at room temperature

Shelf Life: 10 years

Warranty Period: 12 months

Applicable Spaces: Switches, panels, sockets



0.2L~1L

Product Model: FFAFP-2X2

Size: 20mm * 20mm (length and width + 1mm thickness of 3 ± 1 mm)

Shape: Sheet

Color: Blue (other colors available upon customer request)

Packaging: Paper box packaging

Installation Method: Double-sided adhesive self-adhesive or magnetic attachment

Activation Method: Automatically releases fire-extinguishing agent when temperature reaches $105 \pm 10^\circ\text{C}$, no additional devices required

Fire Extinguishing Time: 15-60 seconds (data may vary depending on the environment)

Fire Extinguishing Times: Approximately 3-20 times (tested under experimental conditions)

Fire Extinguishing Environment: Enclosed spaces

Storage Conditions: Keep in a cool, dry place, away from light, and store at room temperature

Shelf Life: 10 years

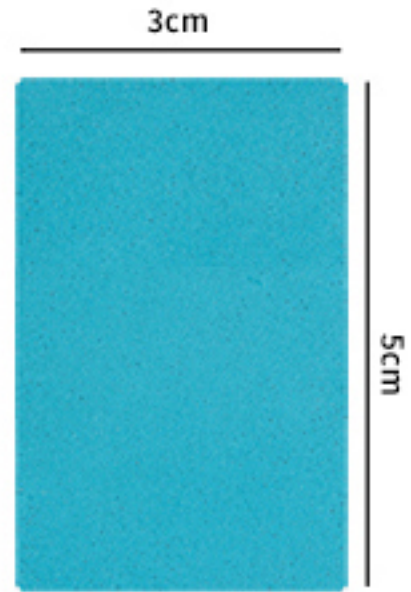
Warranty Period: 12 months

Applicable Spaces: Switches, panels, sockets



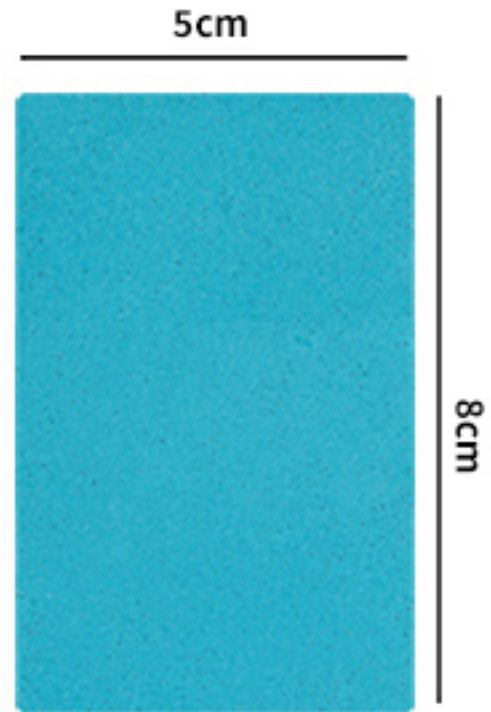
0.8L~4L

Product Model: FFAFP-3X5
Size: 30mm * 50mm (length and width + 1mm thickness of 3 ± 1 mm)
Shape: Sheet
Color: Blue (other colors available upon customer request)
Packaging: Simple packaging
Installation Method: Double-sided adhesive self-adhesive or magnetic attachment
Activation Method: Automatically releases fire-extinguishing agent when temperature reaches $105\pm 10^{\circ}\text{C}$, no additional devices required
Fire Extinguishing Time: 15-60 seconds (data may vary depending on the environment)
Fire Extinguishing Times: 1-3 times (data may vary depending on the environment)
Fire Extinguishing Environment: Enclosed spaces
Storage Conditions: Keep in a cool, dry place, away from light, and store at room temperature
Shelf Life: 10 years
Warranty Period: 12 months
Applicable Spaces: Electric vehicles, electricity meter boxes, distribution boxes, etc.



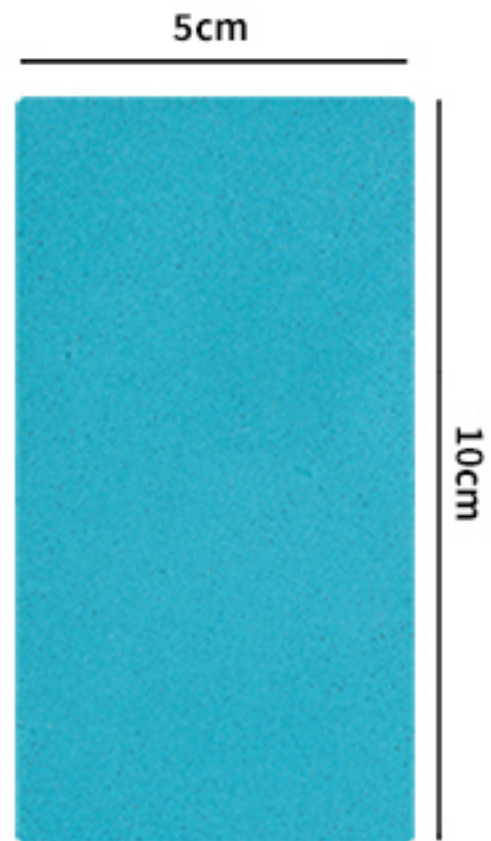
3L~15L

Product Model: FFAFP-5X8
Size: 50mm * 80mm (length and width + 1mm thickness of 3 ± 1 mm)
Shape: Sheet
Color: Blue (other colors available upon customer request)
Packaging: Simple packaging
Installation Method: Double-sided adhesive self-adhesive or magnetic attachment
Activation Method: Automatically releases fire-extinguishing agent when temperature reaches $105\pm 10^{\circ}\text{C}$, no additional devices required
Fire Extinguishing Time: 15-60 seconds (data may vary depending on the environment)
Fire Extinguishing Times: 1-3 times (data may vary depending on the environment)
Fire Extinguishing Environment: Enclosed spaces
Storage Conditions: Keep in a cool, dry place, away from light, and store at room temperature
Shelf Life: 10 years
Warranty Period: 12 months
Applicable Spaces: High and low voltage frequency conversion cabinets, distribution boxes, photovoltaic power stations, soft start control cabinets, electric vehicle exchange cabinets, high and low voltage power distribution.



8L~40L

Product Model: FFAFP-5X10
Size: 50mm * 100mm (length and width + 1mm thickness of 3 ± 1 mm)
Shape: Sheet
Color: Blue (other colors available upon customer request)
Packaging: Simple packaging
Installation Method: Double-sided adhesive self-adhesive or magnetic attachment
Activation Method: Automatically releases fire-extinguishing agent when temperature reaches $105\pm 10^{\circ}\text{C}$, no additional devices required
Fire Extinguishing Time: 15-60 seconds (data may vary depending on the environment)
Fire Extinguishing Times: 1-3 times (data may vary depending on the environment)
Fire Extinguishing Environment: Enclosed spaces
Storage Conditions: Keep in a cool, dry place, away from light, and store at room temperature
Shelf Life: 10 years
Warranty Period: 12 months
Applicable Spaces: High and low voltage frequency conversion cabinets, distribution boxes, photovoltaic power stations, soft start control cabinets, electric vehicle exchange cabinets, high and low voltage power distribution.



10L~50L

Fire is more ferocious than a tiger.

Automatic fire extinguishing patches guard the safety of your entire family.

In the development of a fire scene, the fire generally goes through these four stages. In the initial stage, the fire is relatively easy to extinguish and control. According to surveys, most initial fires are extinguished by the parties involved or volunteer firefighters. For social organizations and individual families, it is very important to have the ability to extinguish initial fires.

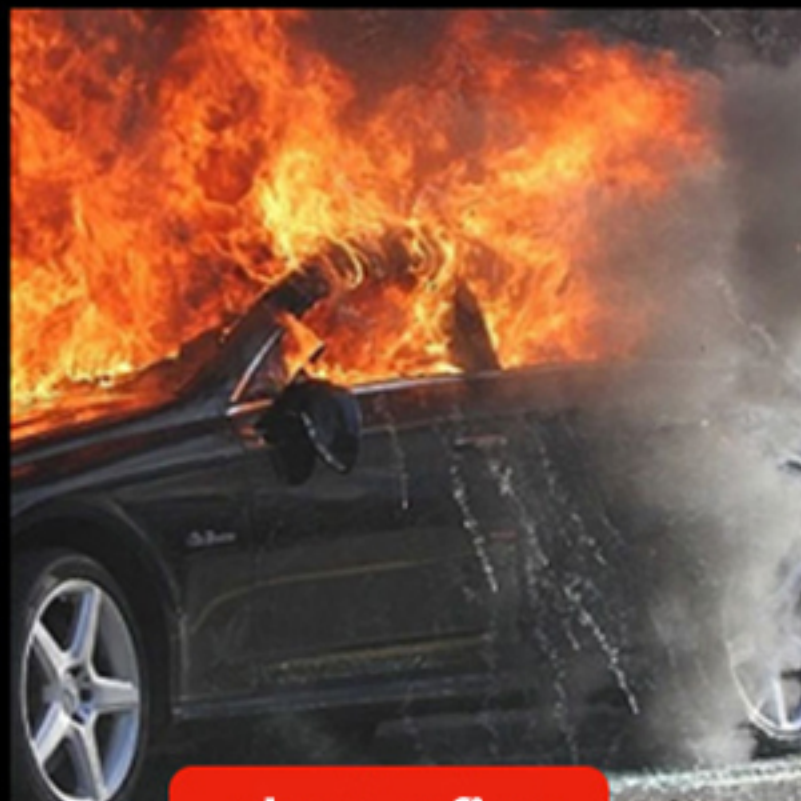


Capable of extinguishing initial Class A, B, C, and E fires.



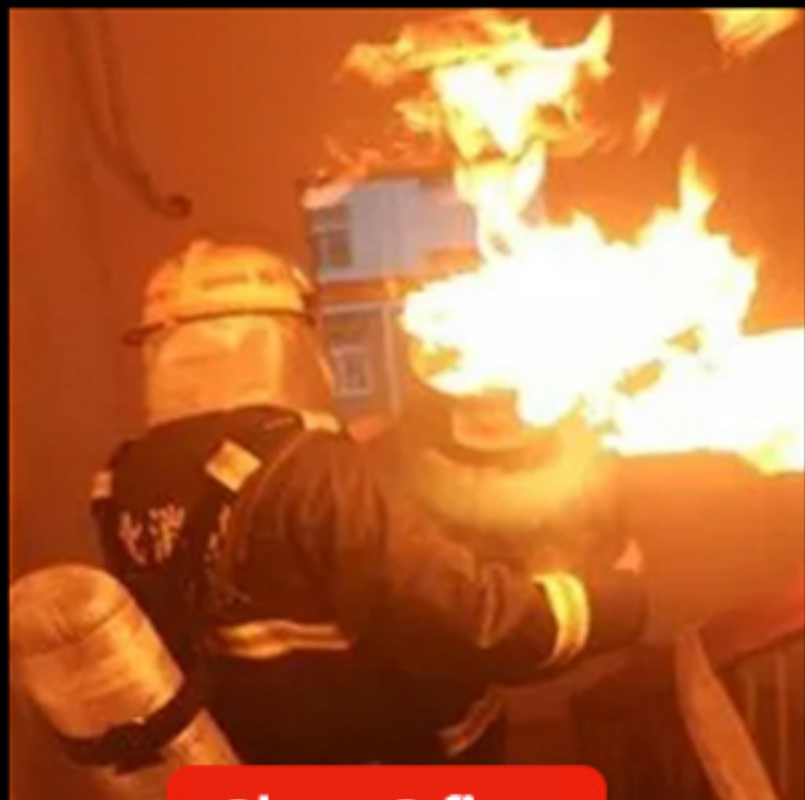
Class A fire:

Fires involving solid materials such as wood, paper, and other similar combustibles.



Class B fire:

Fires involving flammable liquids such as gasoline, alcohol, etc.



Class C fire:

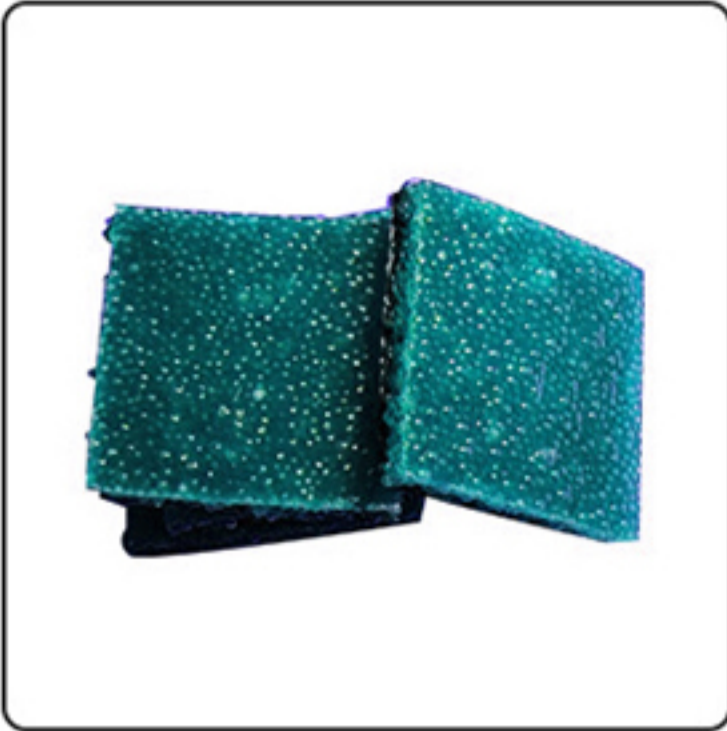
Fires involving gases and vapors (e.g., natural gas, propane, etc.).



Class E fire:

Fires involving electrical materials, such as electrical fires.

Usage Method:

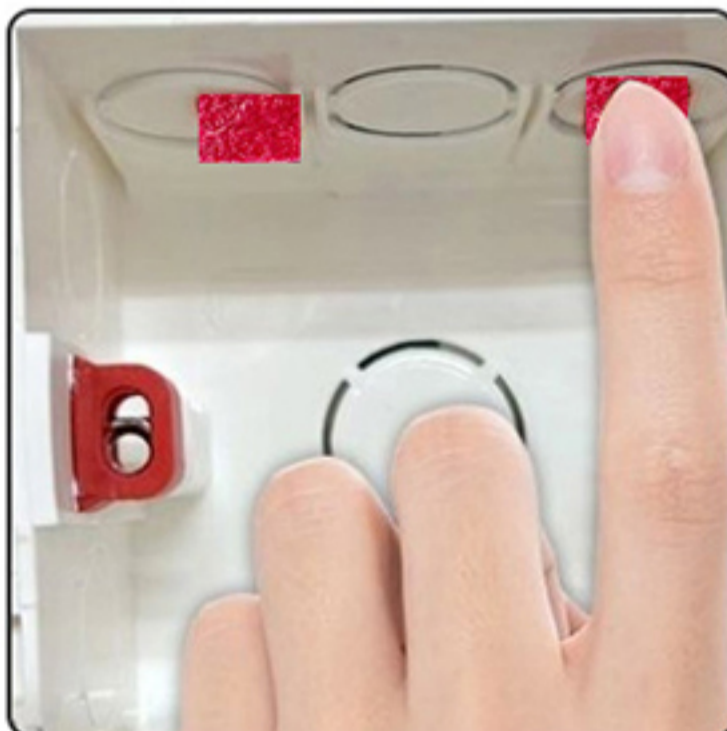


01

Open the packaging and remove the backing from the patch.

02

Attach the product to the upper middle position inside the socket box, or above other potential fire points.



03

Press firmly to ensure it adheres securely.

Precautions and Usage Methods:

Before installing the fire extinguishing patch, please ensure that the power supply is disconnected to avoid electrocution. Remove the backing from the fire extinguishing patch and firmly adhere it to the point of thermal runaway; after the fire extinguishing patch is installed, it is necessary to ensure that the space where the fire extinguishing will occur is sealed.

For use in various scenarios:

1. Lighting fixtures, switches, sockets, indoor circuit breaker boxes, electricity meter boxes.
2. Aerospace, aviation, military, power grids, power batteries, energy storage stations, control cabinets, electrical equipment, power strips, and other confined spaces.
3. Places with high-voltage storage risks such as new energy vehicles, ocean-going ships, etc.
4. Data centers, museums, libraries, archives, precision instruments, cultural relics and books, hospital precision equipment, operating rooms, and other places where contamination is strictly prohibited.
5. Can be used for Class A, B, C, and E fires.



FLAMEFIGHTER®

Automatic Fire Extinguishing Patches

Help you solve critical moments, protect the safety of your entire family
, and are your best choice!



Customized services

Regarding Usage:

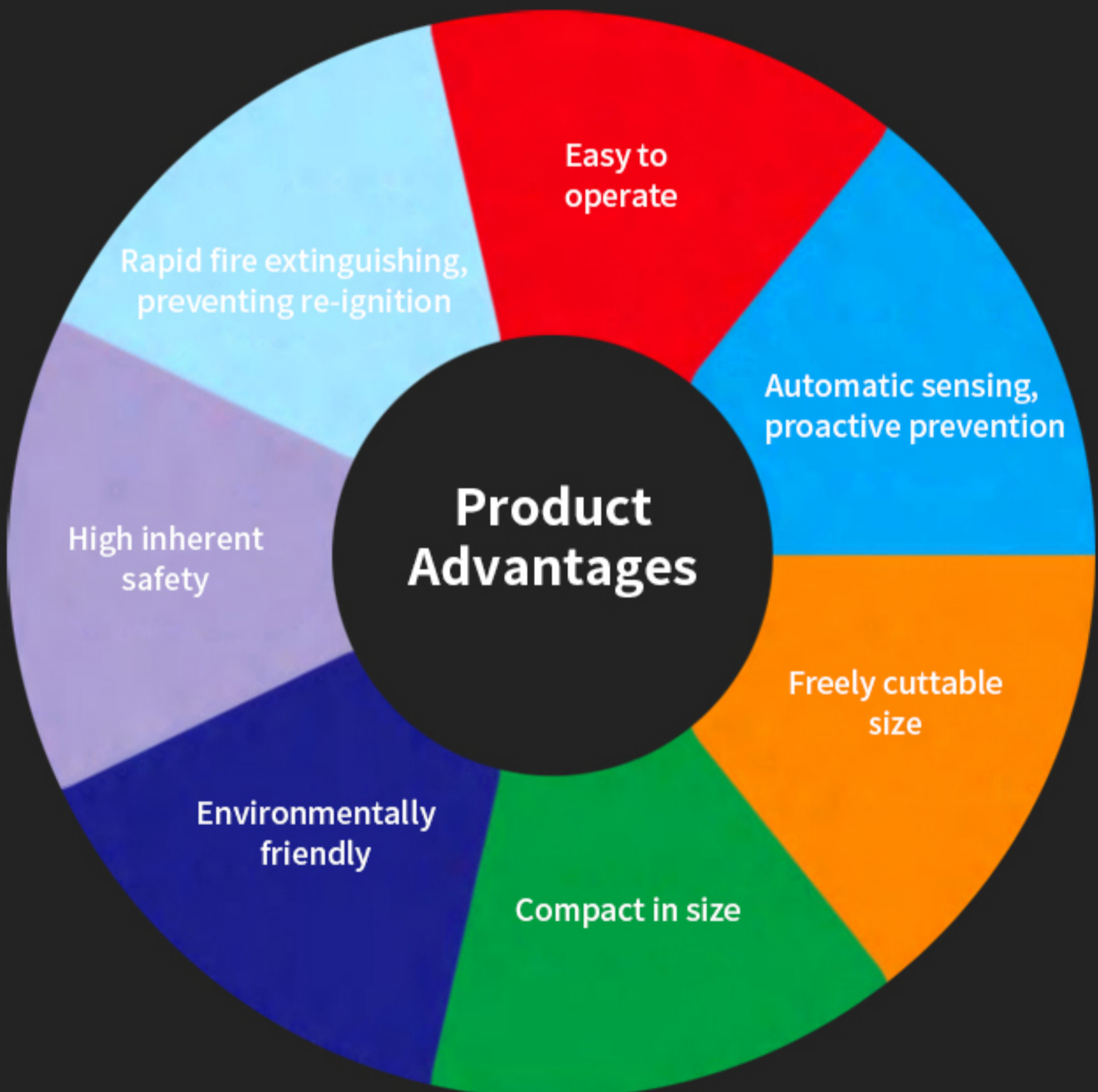
The products are only suitable for initial Class A, B, C, and E fires.

Regarding Quality:

All products sold are brand new, and we guarantee the quality of our products. Please buy with confidence.

Regarding Size:

Custom sizes can be freely cut according to actual needs.





CNC machines



Control cabinets



Medical equipment



Battery cabinets/UPS



low-voltage
information cabinets



Distribution cabinets



Switches/sockets



Electric vehicles



Electricity meter boxes